



Oxford Cambridge and RSA

AS Level Biology B (Advancing Biology)

H022/02 Biology in depth

Insert

Tuesday 7 June 2016 – Afternoon

Time allowed: 1 hour 30 minutes



INSTRUCTIONS

- Do not send this Insert for marking; it should be retained in the centre or recycled. Please contact OCR Copyright should you wish to re-use this document.

INFORMATION

- This Insert contains Fig. 1.2, Fig. 1.3 and Fig. 3.1.
- This document consists of **4** pages.

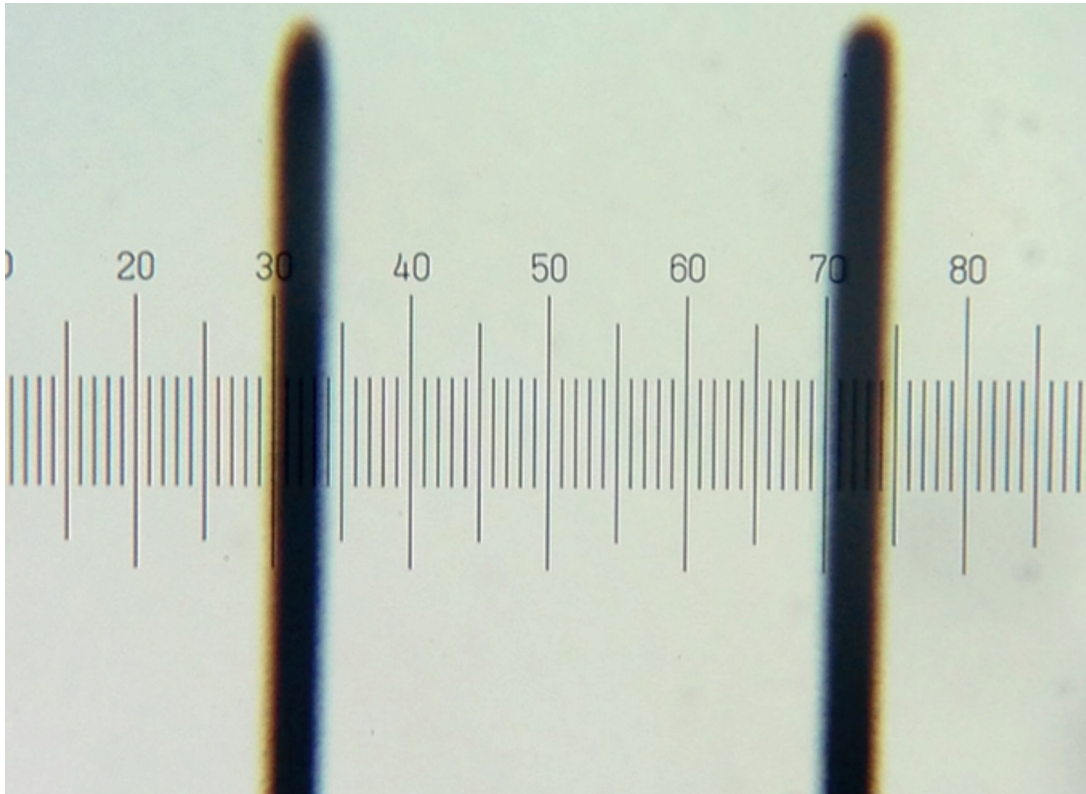


Fig. 1.2

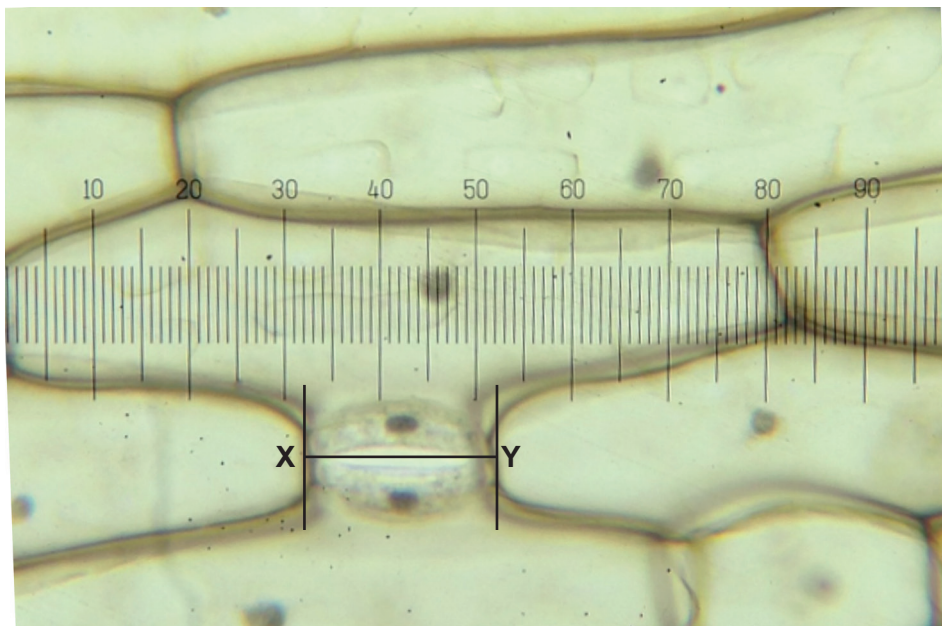


Fig. 1.3

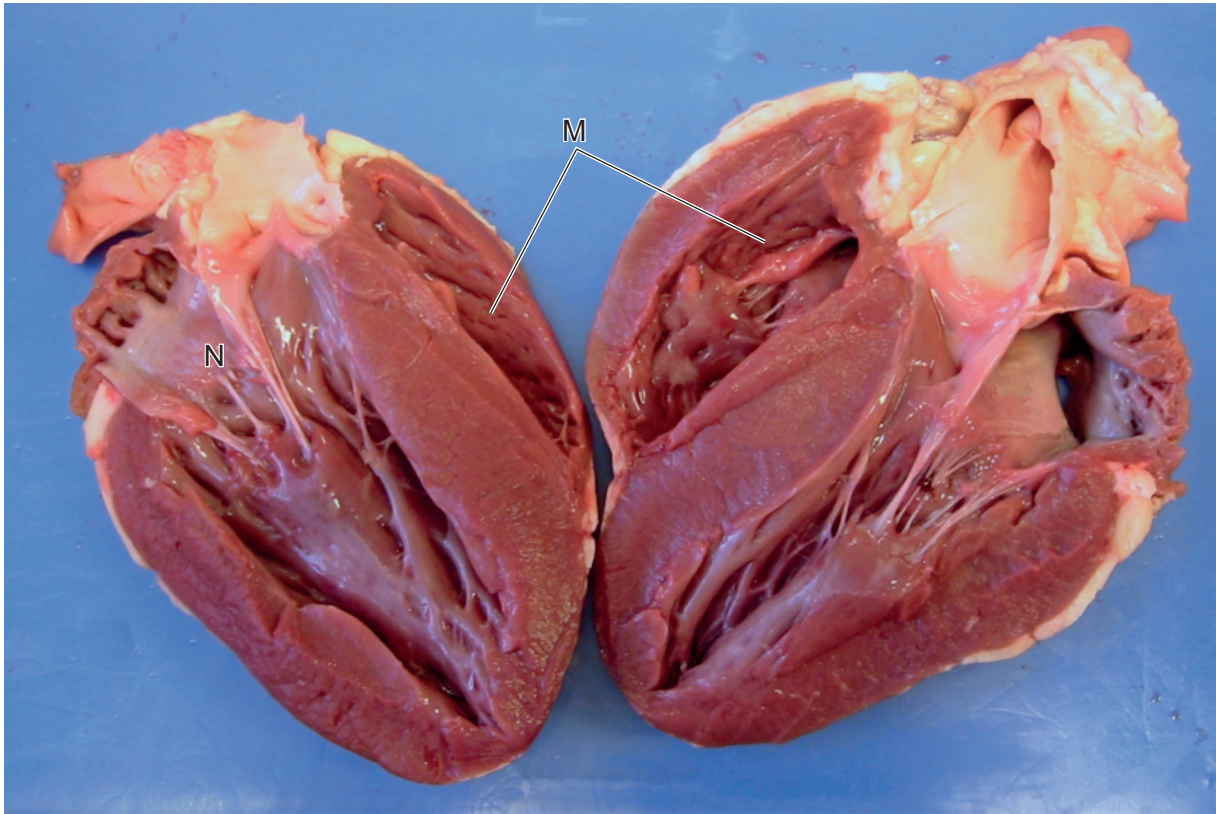


Fig. 3.1

OCR

Oxford Cambridge and RSA

Copyright Information

OCR is committed to seeking permission to reproduce all third-party content that it uses in its assessment materials. OCR has attempted to identify and contact all copyright holders whose work is used in this paper. To avoid the issue of disclosure of answer-related information to candidates, all copyright acknowledgements are reproduced in the OCR Copyright Acknowledgements Booklet. This is produced for each series of examinations and is freely available to download from our public website (www.ocr.org.uk) after the live examination series.

If OCR has unwittingly failed to correctly acknowledge or clear any third-party content in this assessment material, OCR will be happy to correct its mistake at the earliest possible opportunity.

For queries or further information please contact the Copyright Team, First Floor, 9 Hills Road, Cambridge CB2 1GE.

OCR is part of the Cambridge Assessment Group; Cambridge Assessment is the brand name of University of Cambridge Local Examinations Syndicate (UCLES), which is itself a department of the University of Cambridge.